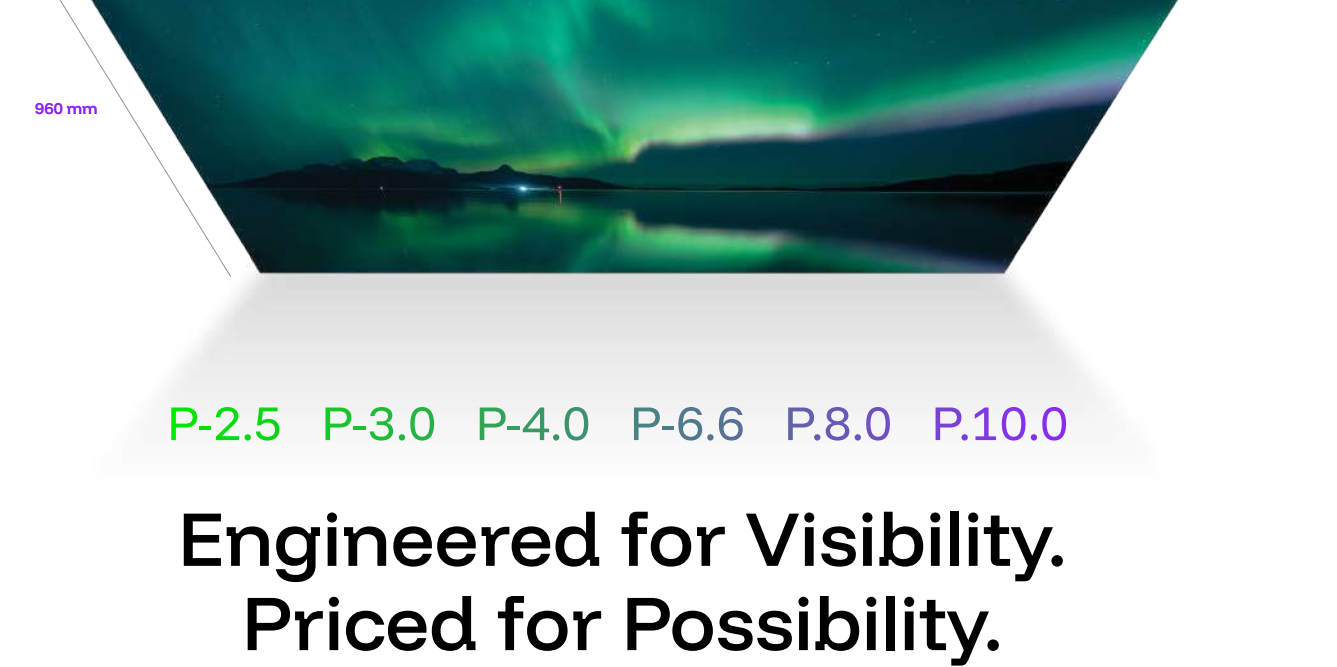


profro

by
everglow



P-2.5 P-3.0 P-4.0 P-6.6 P-8.0 P-10.0

**Engineered for Visibility.
Priced for Possibility.**

Profro delivers reliable outdoor performance with a practical edge—crafted for high-visibility environments like OOH media, premium real estate, and luxury malls. With essential features like 6,500 nits brightness, IP65+ durability, and 3840Hz refresh rate, Profro offers consistent clarity and efficiency—at an accessible price point. Built for the big stage, without the premium tag.

**25 kg
Per Cabinet**

Solid build for stable outdoor installation.

**Brightness
Up to 6,500 Nits**

Clear and vibrant—even in direct sunlight.

**3840Hz
Refresh Rate**

Smooth visuals with sharp motion clarity.

450W Avg/sqm

Reliable performance with standard power draw.

**Fan-Based
Cooling**

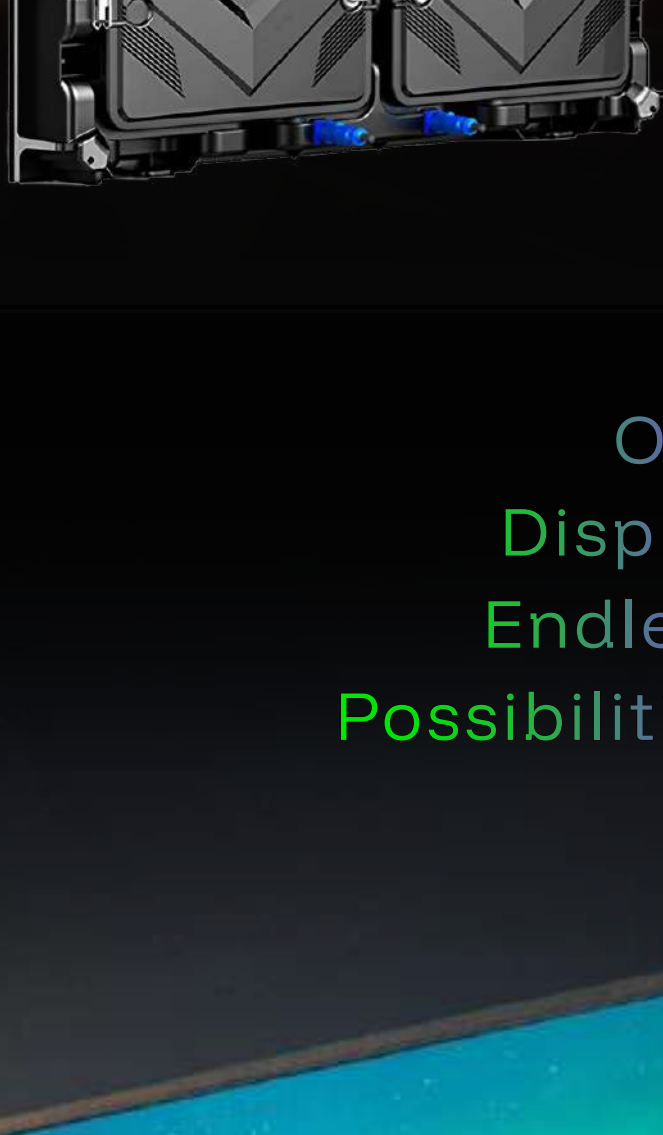
Efficient airflow for consistent operation.

**IP65+ Water & Dust
Resistance**

Built to withstand harsh outdoor conditions.

Rear Maintenance

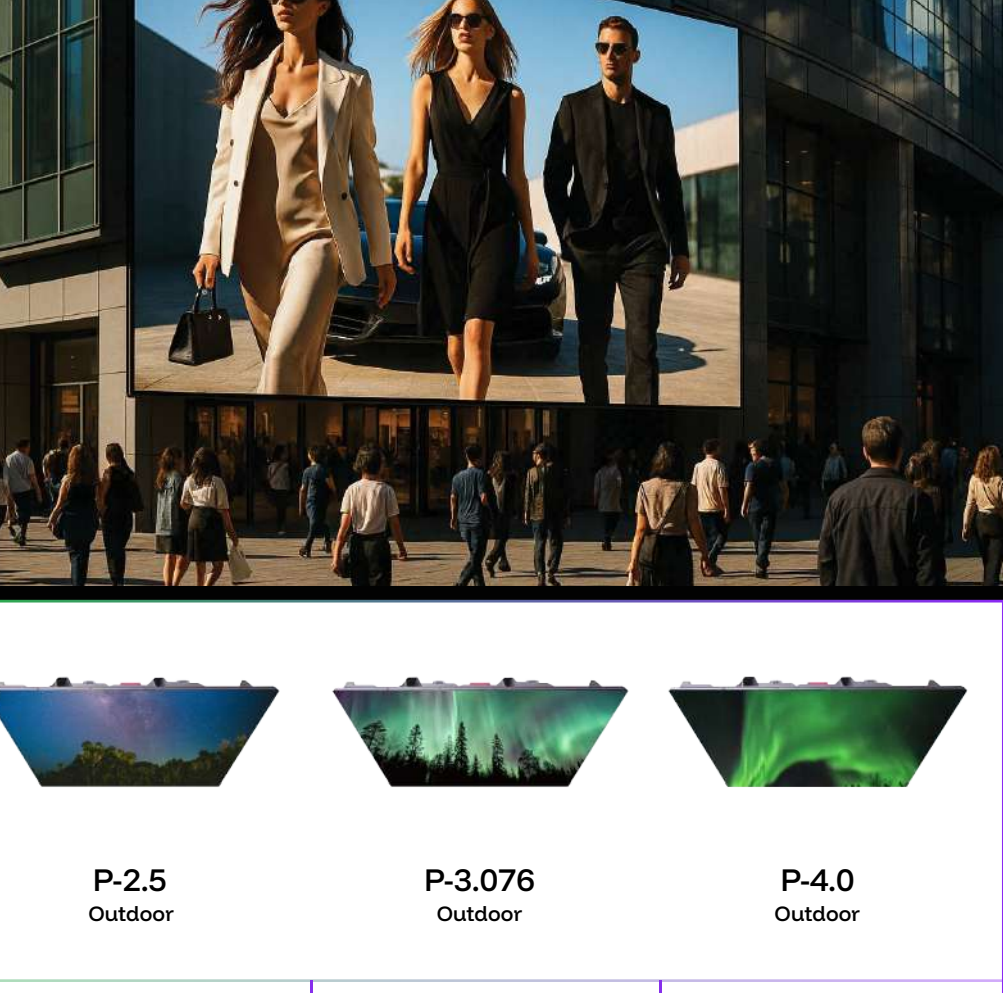
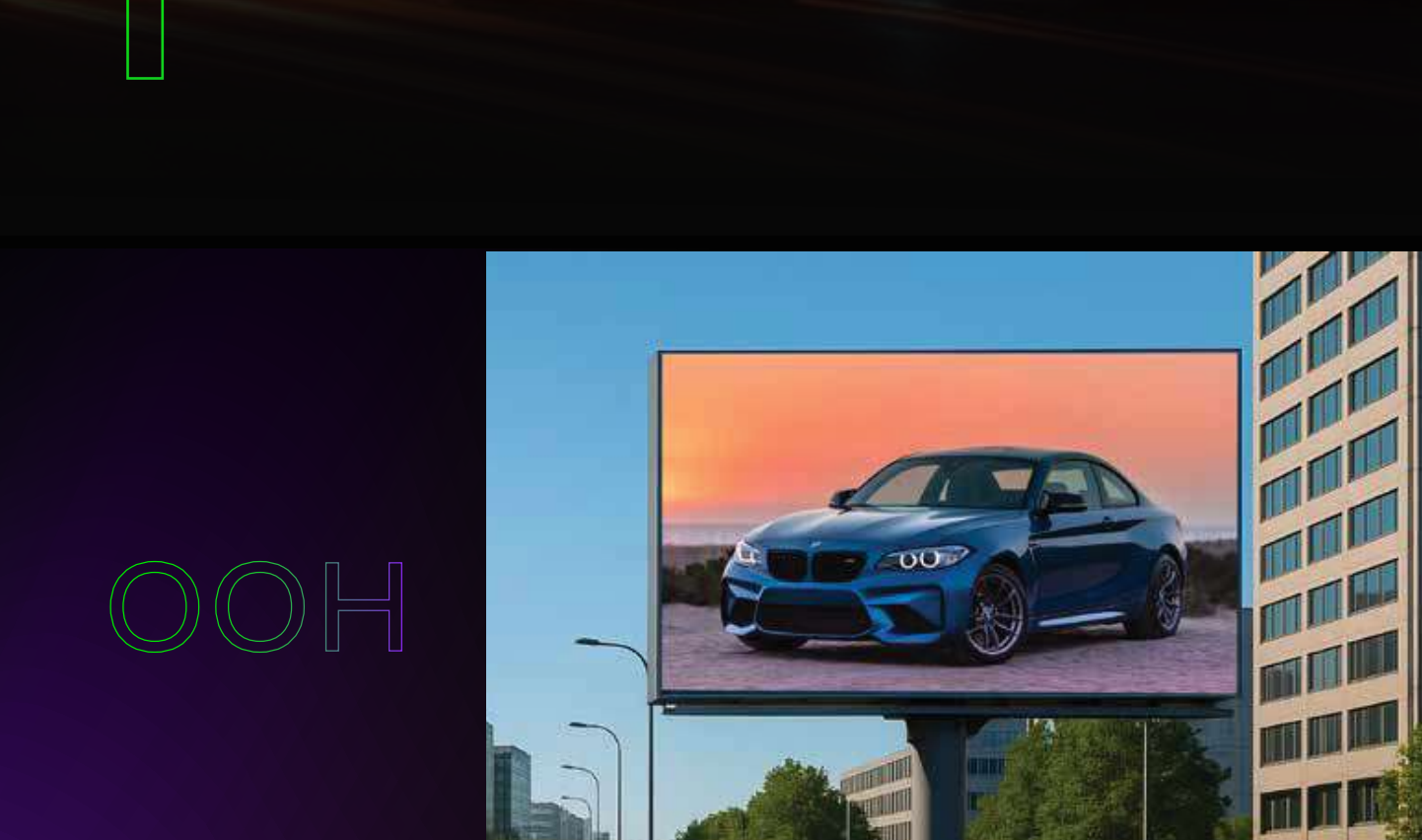
Quick access for simplified service and support.



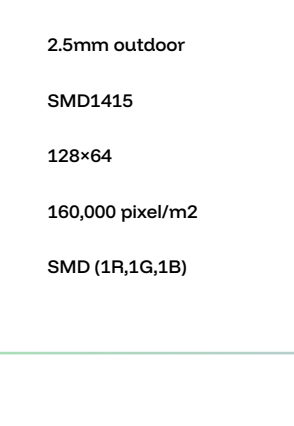
**Experience The
Unmatched Feeling**



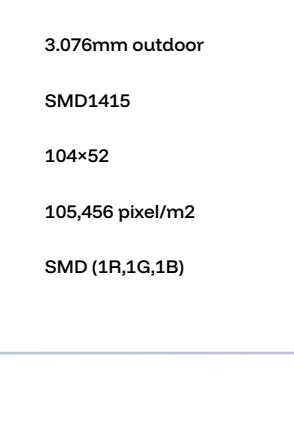
One
Display
Endless
Possibilities



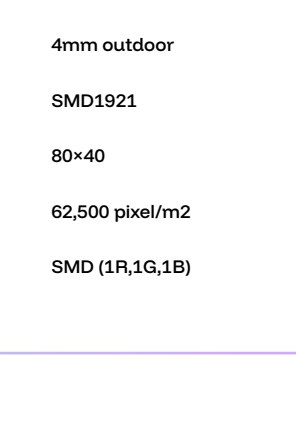
**Technical
Specification**



**P-2.5
Outdoor**



**P-3.076
Outdoor**



**P-4.0
Outdoor**

Block Module

Dimensions (w x h)

Pixel pitch

LED Configuration

Resolution (w x h)

Pixel Density

Pixel Configuration

320mm×160mm

2.5mm outdoor

SMD1415

128×64

160,000 pixel/m²

SMD (1R,1G,1B)

320mm×160mm

3.076mm outdoor

SMD1415

104×52

105,456 pixel/m²

SMD (1R,1G,1B)

320mm×160mm

4mm outdoor

SMD1921

80×40

62,500 pixel/m²

SMD (1R,1G,1B)

Cabinet

Dimensions (w x h)

Physical Resolution (w x h)

Cabinet Material

Weight

Thickness (Front / Rear)

Service

Service

960mm×960mm

384×384

Diecast

25kgs

100 mm

Rear

5V/60A

960mm×960mm

312×312

Diecast

25kgs

100 mm

Rear

5V/60A

960mm×960mm

240×240

Diecast

25kgs

100 mm

Rear

5V/60A

Parameter

Brightness

Viewing Angle

Minimum Viewing Distance

Brightness Control

Grey scale

Refresh frequency

Driving mode

Scan method

Input power frequency

Input Voltage

Power Consumption (m2)

Lifetime

International Protection

Operation temperature

Working humidity

5500cd/m²

H-140° / V-120°

>2.5m

256 levels

16bits

>3840 Hz

Constant Current Driving

1/16 Scanning

60 Hz

110-220VAC/5VDC

750watt Max / 250watt Avg

1,00,000 hours

IP65 Front & IP 54 Rear

-20 ~ 60 °C±10%

10%—90%RH

5500 - 6500cd/m²

H-140° / V-120°

>3.076m

256 levels

16bits

>3840 Hz

Constant Current Driving

1/16 Scanning

60 Hz

110-220VAC/5VDC

750watt Max / 250watt Avg

1,00,000 hours

IP65 Front & IP 54 Rear

-20 ~ 60 °C±10%

10%—90%RH

5500 - 6500cd/m²

H-140° / V-120°

>4m

256 levels

16bits

>3840 Hz

Constant Current Driving

1/16 Scanning

60 Hz

110-220VAC/5VDC

750watt Max / 250watt Avg

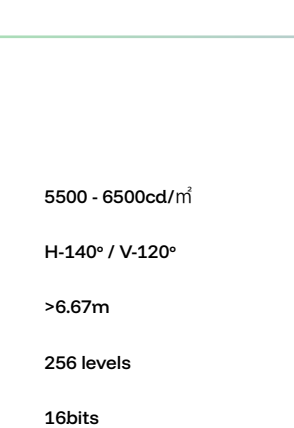
1,00,000 hours

IP65 Front & IP 54 Rear

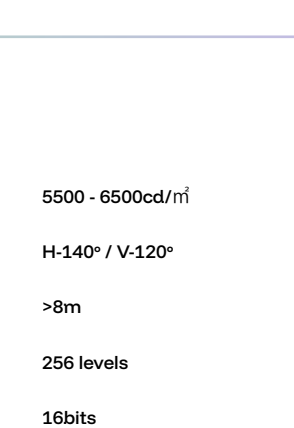
-20 ~ 60 °C±10%

10%—90%RH

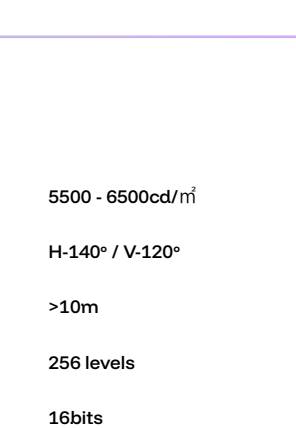
**Technical
Specification**



**P-6.67
Outdoor**



**P-8.0
Outdoor**



**P-10.0
Outdoor**

Block Module

Dimensions (w x h)

Pixel pitch

LED Configuration

Resolution (w x h)

Pixel Density

Pixel Configuration

320mm×320mm

6.67mm outdoor

SMD 2525 / 2727 / 3535

48×48

22,470pixel/m²

SMD (1R,1G,1B)

320mm×160mm

8mm outdoor

SMD 2525 / 2727 / 3535

40 x 20

15,625 pixel/m²

SMD (1R,1G,1B)

320mm×160mm

10mm outdoor

SMD 2525 / 2727 / 3535

32 x 16

10,000 pixel/m²

SMD (1R,1G,1B)

Cabinet

Dimensions (w x h)

Physical Resolution (w x h)

Cabinet Material

Weight

Thickness (Front / Rear)

Service

Service

960mm×960mm

144×144

Diecast

25kgs

100 mm

Rear / Front

5V/60A

960mm×960mm

120×120

Diecast

25kgs

100 mm

Rear / Front

5V/60A

960mm×960mm

96×96

Diecast

25kgs

100 mm

Rear / Front

5V/60A

Parameter

Brightness

Viewing Angle

Minimum Viewing Distance

Brightness Control

Grey scale

Refresh frequency

Driving mode

Scan method

Input power frequency

Input Voltage

Power Consumption (m2)

Lifetime

International Protection

Operation temperature

Working humidity

5500 - 6500cd/m²

H-140° / V-120°

>6.67m

256 levels

16bits

>3840 Hz

Constant Current Driving

1/8 Scanning

60 Hz

110-220VAC/5VDC

750watt Max / 250watt Avg

1,00,000 hours

IP65 Front & IP 54 Rear

-20 ~ 60 °C±10%

10%—90%RH

5500 - 6500cd/m²

H-140° / V-120°

>8m

256 levels

16bits

>3840 Hz

Constant Current Driving

1/5 Scanning

60 Hz

110-220VAC/5VDC

750watt Max / 250watt Avg

1,00,000 hours

IP65 Front & IP 54 Rear

-20 ~ 60 °C±10%

10%—90%RH

5500 - 6500cd/m²

H-140° / V-120°

>10m

256 levels

16bits

>3840 Hz

Constant Current Driving

1/4 Scanning

60 Hz

110-220VAC/5VDC

750watt Max / 250watt Avg

1,00,000 hours

IP65 Front & IP 54 Rear

-20 ~ 60 °C±10%

10%—90%RH

www.everglowled.com

everglow

Office

G2 B Wing, Sagar Tech Plaza
Andheri Kurla Road,
Sakinaka, Andheri(E),
Mumbai, Maharashtra,
400072

Factory

Plot No. 11 A,
Khokani Industrial Estate,
Near Shiv Mandir, Sativall,
Vasai East - 401202